

ONE CENTRAL PLACE

Minutes to MTR Hong Kong Station & Central Station ^{3(b)}

數分鐘迅達港鐵香港站及中環站 ^{3(a)}



1(a), 1(b)

33 Gage Street, Central, Hong Kong
香港中環結志街33號



A New Panorama of Modern Living 匠心時尚生活



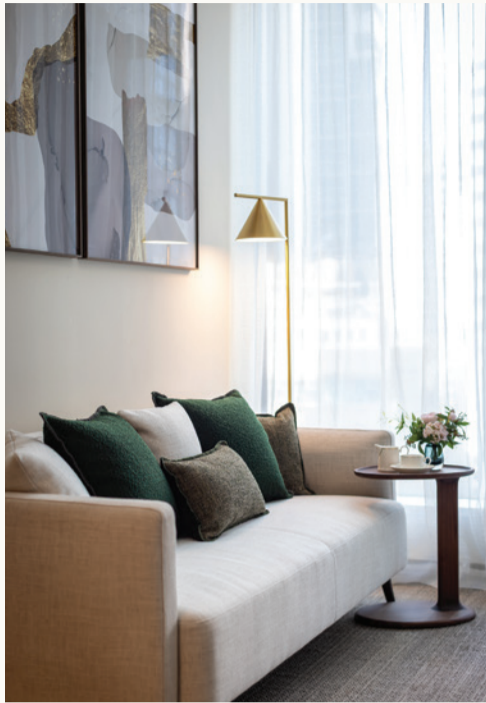
Prestigious 1-3 bedroom designer apartments with premium concierge service for lease, just minutes' away from Central Business District and MTR stations ^{3(b)}. Beyond elegance, One Central Place features contemporary architecture with artistic flair, capturing the essence of sophisticated metropolitan living, with flexible leasing options.

矜罕一房至三房尊貴住宅提供時尚設計傢俱及星級服務，無縫連接中環核心商圈 ^{3(a)}。One Central Place 薈萃國際頂尖團隊的匠心設計，結合藝術與現代建築，尊擁國際都會文化氛圍，並提供靈活多元租賃選擇。

Clubhouse^{6(b)}
會所設施^{6(a)}



Masterclass Living^{8(b)}
臻品生活^{8(a)}



Services & Facilities
服務及設施

- Twice a week housekeeping services
每週兩次房間清潔服務
- Concierge services
禮賓部
- Maintenance services
維修服務
- Exclusive Sino Living APP
專屬APP
- 24-hour security services
24小時保安服務
- Smart Mailbox
智能感應郵箱
- Access control system
門禁系統



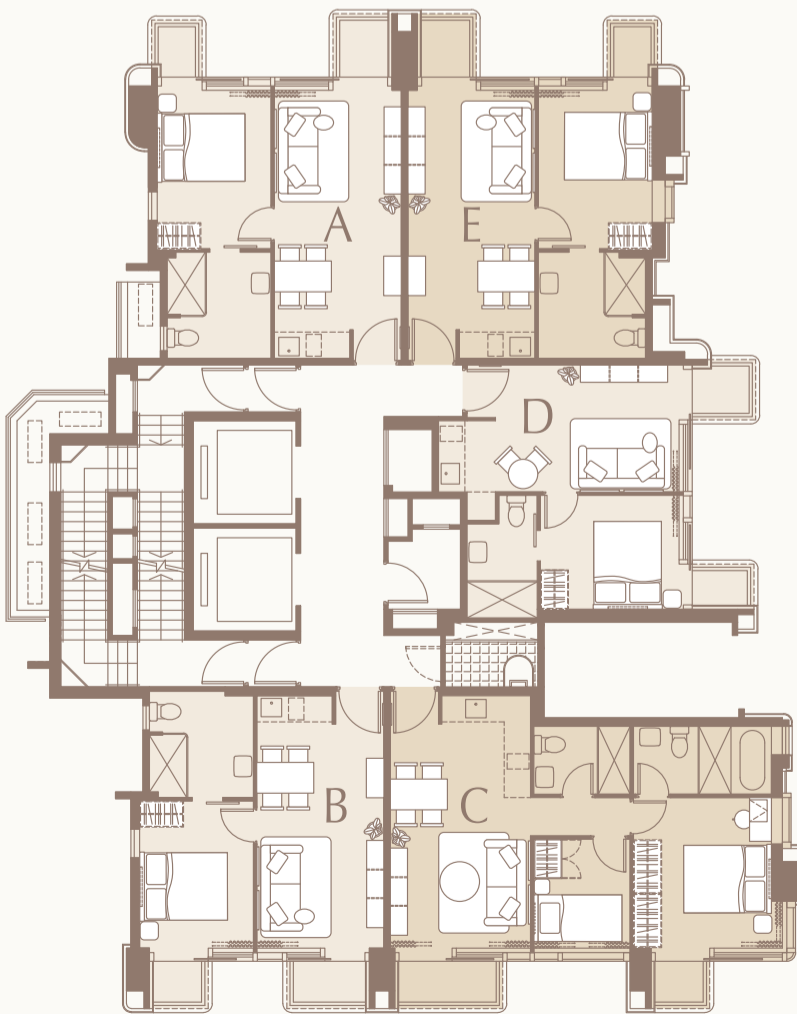
Scan QR Code for
more Unit Floor Plans

掃描二維碼獲取
更多單位平面圖

6/F – 12/F, 15/F – 17/F Floor Plan^{7(b)}
6樓至12樓、15樓至17樓平面圖^{7(a)}



Victoria Harbour / IFC 維多利亞港 / 國際金融中心



Mid - Levels 中半山

Unit A
455 sq. ft. 平方呎
1-Bedroom Suite 一房單位

Unit B
432 sq. ft. 平方呎
1-Bedroom Suite 一房單位

Unit C
632 sq. ft. 平方呎
2-Bedroom Suite 兩房單位

Unit D
394 sq. ft. 平方呎
1-Bedroom Suite 一房單位

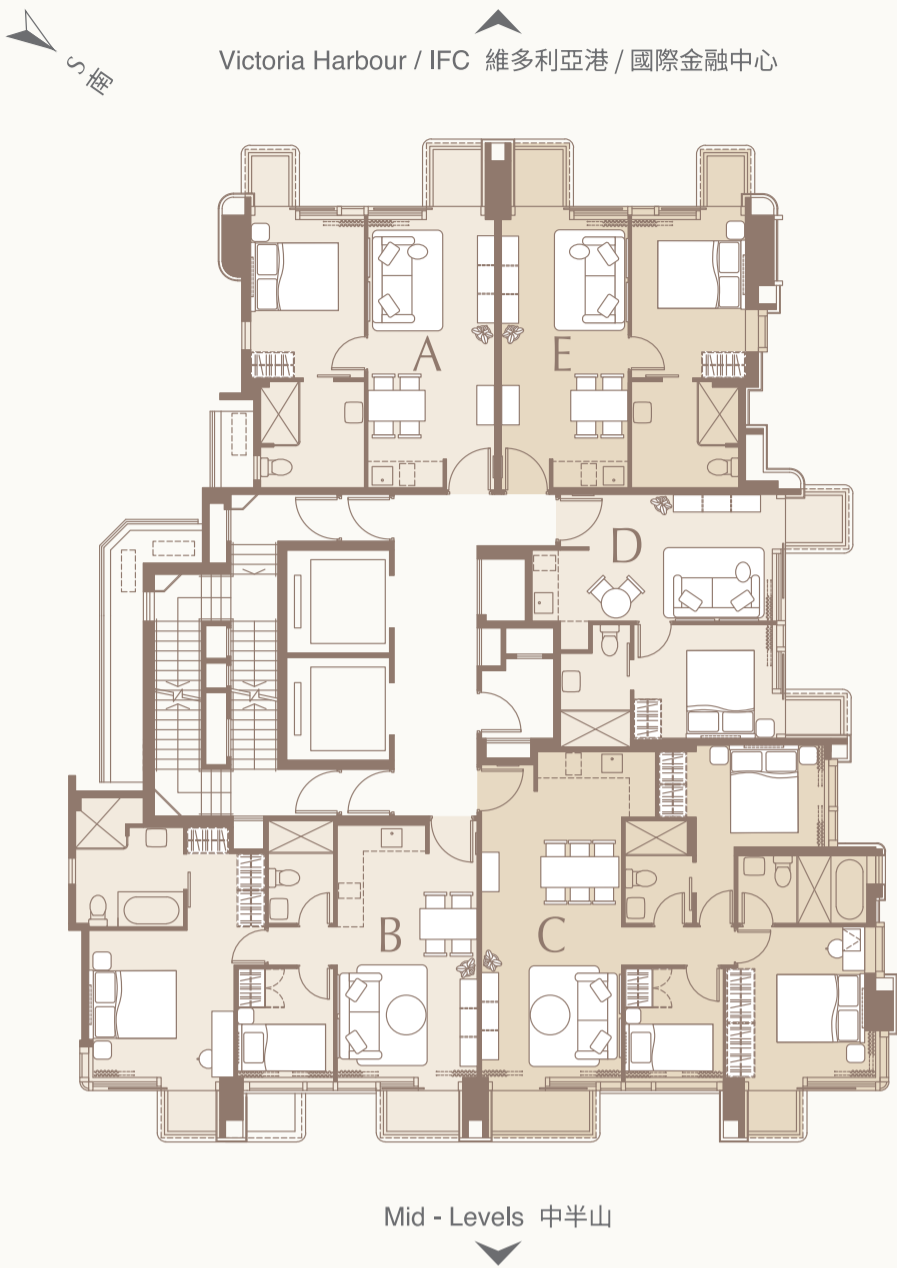
Unit E
458 sq. ft. 平方呎
1-Bedroom Suite 一房單位

* All unit sizes are shown in saleable area
所有單位均為實用面積

Scale 比例 0 5M / 米

18/F – 19/F Floor Plan ^{7(b)}

18樓至19樓平面圖 ^{7(a)}



Unit A

455 sq. ft. 平方呎
1-Bedroom Suite 一房單位

Unit B

672 sq. ft. 平方呎
2-Bedroom Suite 兩房單位

Unit C

809 sq. ft. 平方呎
3-Bedroom Suite 三房單位

Unit D

383 sq. ft. 平方呎
1-Bedroom Suite 一房單位

Unit E

458 sq. ft. 平方呎
1-Bedroom Suite 一房單位

* All unit sizes are shown in saleable area
所有單位均為實用面積

Scale 比例 0 5M / 米

In-room Provisions
居室配套

- Fully equipped kitchen and bathroom
設備完善的廚房及浴室
- 2-in-1 washer and dryer
二合一洗衣乾衣機
- Smart TV with Now TV channels and local channels
智能電視連Now TV及本地頻道
- Complimentary 5G broadband internet and Wi-Fi
免費5G無線寬頻上網服務
- Complimentary local phone calls
免費本地電話服務



Gaggenau for Appliances 高端家電組合



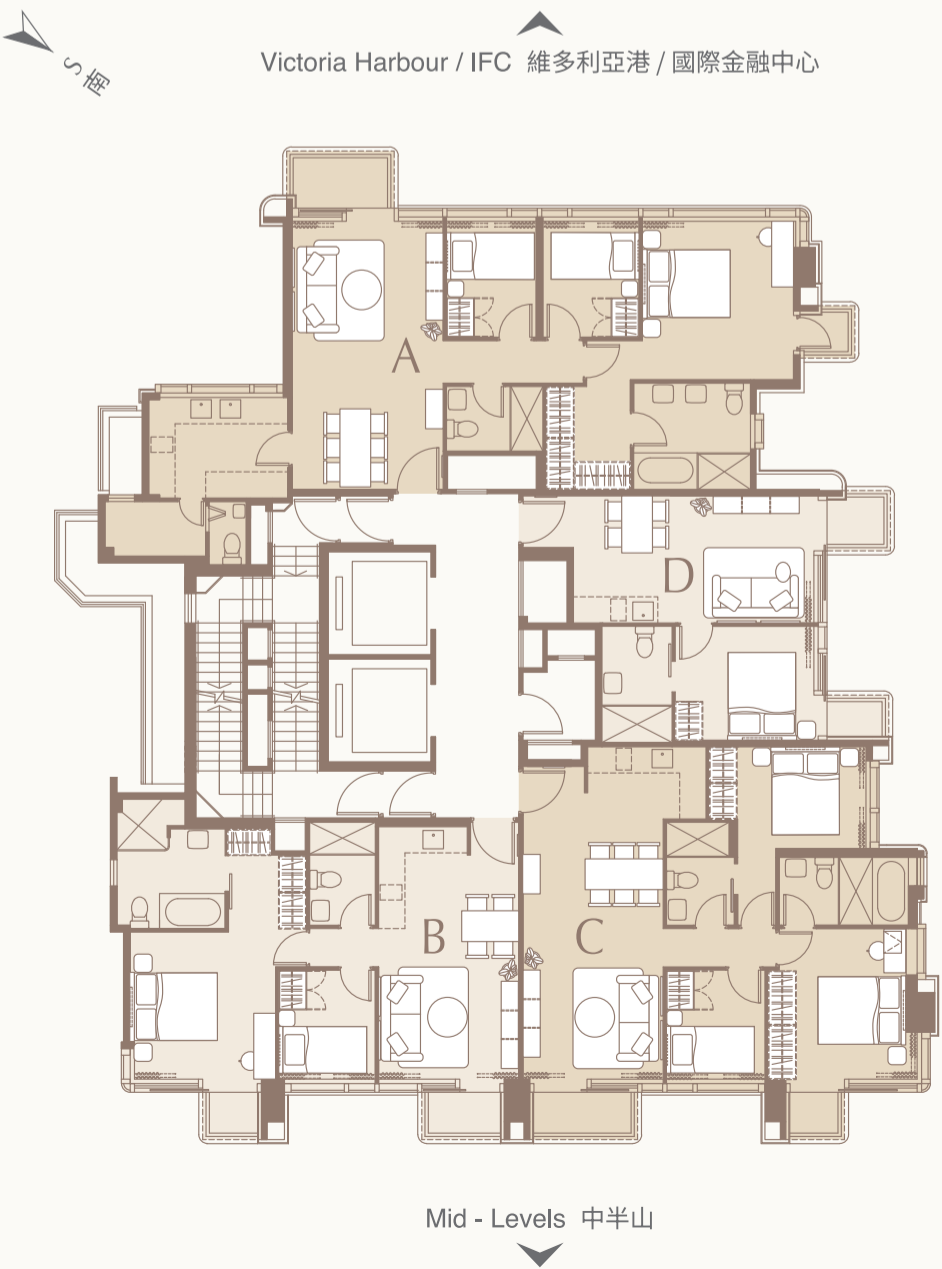
Dornbracht for Bath 浴室系列



LOCKLY® for Security 智能門鎖

21/F – 23/F, 25/F – 33/F Floor Plan ^{7(b)}

21樓至23樓、25樓至33樓平面圖 ^{7(a)}



Unit A

992 sq. ft. 平方呎
3-Bedroom Suite 三房單位

Unit B

672 sq. ft. 平方呎
2-Bedroom Suite 兩房單位

Unit C

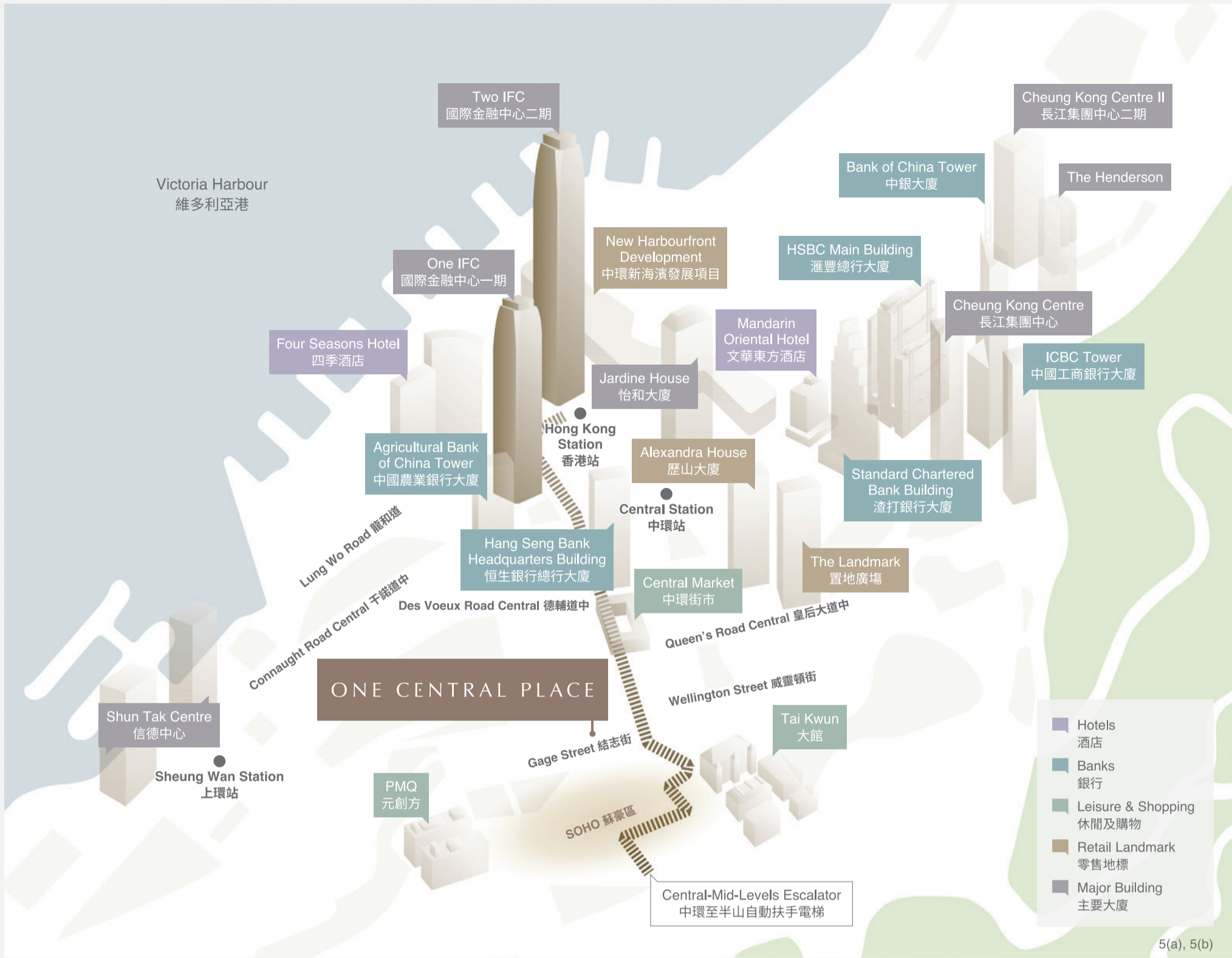
812 sq. ft. 平方呎
3-Bedroom Suite 三房單位

Unit D

407 sq. ft. 平方呎
1-Bedroom Suite 一房單位

* All unit sizes are shown in saleable area
所有單位均為實用面積

Scale 比例 0 5M / 米



The Pinnacle of Connectivity 都會交通樞紐

Within walking distance to Central-Mid-Levels Escalator^{2(b)}, MTR station and Airport Express^{3(b)}, One Central Place embodies Hong Kong's pinnacle of connectivity and access.

One Central Place 座落中環都會核心地段，中環至半山自動扶手電梯^{2(a)}、地鐵站及機場快線近在咫尺^{3(a)}，提供全方位交通網絡。

Estimated journey time from One Central Place to various MTR stations^{3(b)}

從 One Central Place 前往各港鐵站之步行時間^{3(a)}

To 往	Approx.約 (min. 分鐘)
Central Station 中環站	6.5
Hong Kong Station Airport Express 香港站機場快線	7.5

Leasing Enquiries 租務查詢

8107 0038 6396 7989



33 Gage Street, Central, Hong Kong
香港中環結志街33號

www.sino-residential.com leasingcs@sino.com



1(a) 任何本單張內的圖片、畫像、平面圖或資料並不構成發展商的任何不備明示或隱含之要約、陳述、承諾或保證。該圖片、畫像或平面圖並非按照比例繪畫，亦經簡化及電腦修飾處理。1(b) 本單張內的資料以政府相關機構不時公布的資料為準。2(a) 接駁發展項目的行人天橋之位置及設計以相關政府部門批准為準。3(a) 由發展項目出發，步行距離可達中環站及香港站。工作人員於2024年2月27日由發展項目步行至中環站D2出口的步行時間約為6.5分鐘；由發展項目步行至香港站C出口的步行時間約為7.5分鐘，僅供參考。實際所需時間受天氣狀況、路面狀況、行走路線及個人步速影響而有所差異。4(a) 設計概念圖為發展項目的模擬效果圖片，圖片經電腦修飾處理，純屬畫家對發展項目之想像，僅供參考。發展商亦保留根據有關政府部門批准之最新建築圖則修改發展項目及其任何部分的權利。圖像並不構成亦不應被詮釋為構成發展商作出任何不備明示或隱含之要約、陳述、承諾或保證。5(a) 繪圖內顯示的地圖資料來源為Google Maps(擷取日期：2024年2月27日)。繪圖並非按照比例繪畫，亦經簡化及電腦修飾處理，純屬畫家之想像。繪圖中所顯示之發展項目的位置、區域、商場、設施、地點、車站位置、幹道及交通網絡等(如有)僅供參考，並以政府、相關機構或項目持份者不時公布或決定為準。相關資料乃反映本廣告/宣傳資料印製日期之狀況，且可能不時出現改變。6(a) 圖片為發展項目的住客會所或康樂設施部份範圍模擬效果圖片或設計概念圖，經電腦修飾處理，純屬設計師對發展項目之想像。圖片僅作展示發展項目的住客會所或康樂設施部份範圍大槪佈局之用，僅供參考。圖片不構成亦不應被詮釋為構成發展商作出任何不備明示或隱含之要約、陳述、承諾或保證。發展商保留權利修改住客會所、康樂設施或公用地方的設計、用途及名稱而無須另行通知。各項發展項目之設施的開放時間及使用守則受相關法律、批地文件、公契條款、會所使用守則及現場環境狀況限制。住客會所或康樂設施的落成日期以屋宇署、地政總署及/或其他相關政府部門之最終批核為準。部份設施及/或服務的使用或操作可能受制於有關部門發出之同意書或許可證，並有可能收取額外費用。7(a) 樓面平面圖的實用面積以及露台、工作平台及陽台(如有)的樓面面積，是按照《一手住宅物業銷售條例》第8條計算得出的。其他指明項目的面積(不計算入實用面積)，是按《一手住宅物業銷售條例》附表2第2部計算得出的。上述所列之面積以平方米表示。上述以平方呎所列之面積由以平方米所列之面積以1平方米=10,764平方呎換算並四捨五入至整數平方呎之方法計算得出，與以平方米表達之面積可能有些微差異。8(a) 此真實照片於2025年4月15日於發展項目拍攝，經電腦修飾處理，僅供參考。發展商保留其更改或改變發展項目之設計、規格、特徵、圖則及用料之一切權利，事前毋須通知。本照片並不構成任何發展商就本發展項目及其景觀不備明示或隱含之要約、承諾、陳述或保證。

1(a) None of the photos or images or floor plans shown or statements included in this leaflet shall constitute or be construed as constituting the Developer giving any offer, representation, undertaking, or warranty, whether express or implied. They are not drawn or resized to scale and have been edited and processed with computerized imaging techniques. 1(b) Any information shown in this leaflet are subject to the materials issued by the relevant Government authorities from time to time. 2(b) The location and design of the footbridge shall be subject to the latest approval by the relevant government departments. 3(b) The estimated walking time refers to the walking time by a staff of the Developer on 27 February 2024 from the Development to Exit D2 of MTR Central Station which takes approximately 6.5 minutes and the walking time by that staff from the Development to Exit C of the MTR Hong Kong Station is approximately 7.5 minutes. The estimated walking time is for reference only and the actual walking time is subject to the actual road conditions, weather, route and walking pace. 4(b) This drawing is a conceptual sketch of the Development only. It has been edited and processed with computerized imaging techniques and represents an artist's impression only. The drawing does not represent the actual condition or appearance of any part of the Development and it is for reference only. The Developer reserves the right to alter, amend or change the latest building plans approved by the relevant government departments. The drawing shall not constitute or be construed as constituting the Developer giving any offer, representation, undertaking, or warranty, whether express or implied. 5(b) The source of the information shown in this drawing is Google Maps (obtained on 27 February 2024). This drawing is not drawn to scale and it has been edited and processed with computerized imaging techniques and represents an artist's impression only. The location of the Development, district, malls, facilities, location of public transport stations, strategic routes and transportation network (if any) shown in this drawing is for reference only, and are subject to the information and materials issued by the relevant Government authorities or relevant stakeholders. The information shown in this drawing reflects the status as of the printing date and is subject to change from time to time. 6(b) These photographs are the conceptual design plan only and have been edited and processed with computerized imaging techniques. They are the artist's impression of the clubhouse or recreational facilities of Development only, and is for reference only. These photos only reflect the approximate layout of the recreational facilities or club house and it is for reference only. The Developer reserves the right to amend the building plans to amend the clubhouse design, layout, name and usage of any part of the clubhouse without further notice. The design of the Development shall be subject to the latest building plans approved by the relevant government departments. The opening hours and use of different facilities are subject to relevant laws, land grant conditions, terms of the deed of mutual covenant of the Development and the conditions of the actual environment. The use of clubhouse facilities may be subject to charges. 7(b) The saleable area contained in the floor plans is calculated in accordance with Section 8 of the Residential Properties (First-hand Sales) Ordinance (Cap. 621). The areas in square feet have been converted from square metres based on a conversion rate of 1 square metre = 10,764 square feet and rounded off to the nearest integer which may be slightly different from that shown in square metre. 8(b) The photo is taken at the Development on 15 April 2025 and has been processed with computerized imaging techniques and is for reference only. The Developer reserves all rights to amend/change the design, specifications, features and plans and materials of the Development thereof, without prior notice. The photo shall not constitute or be construed as constituting the Developer giving any offer, representation, undertaking, or warranty, whether express or implied.